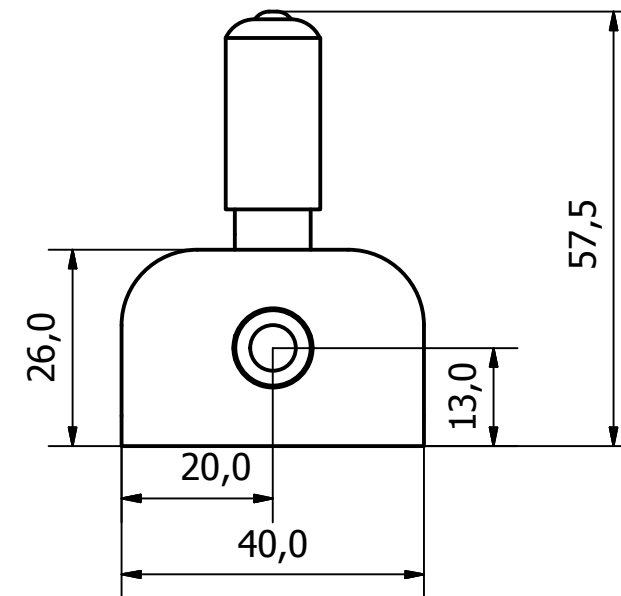
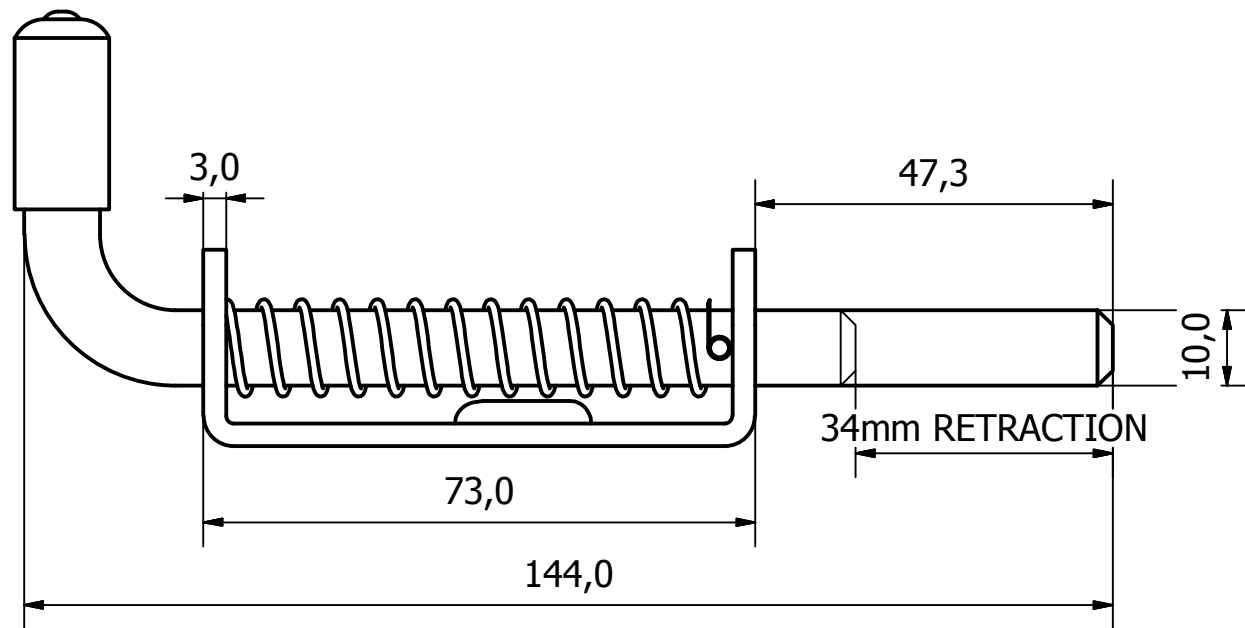
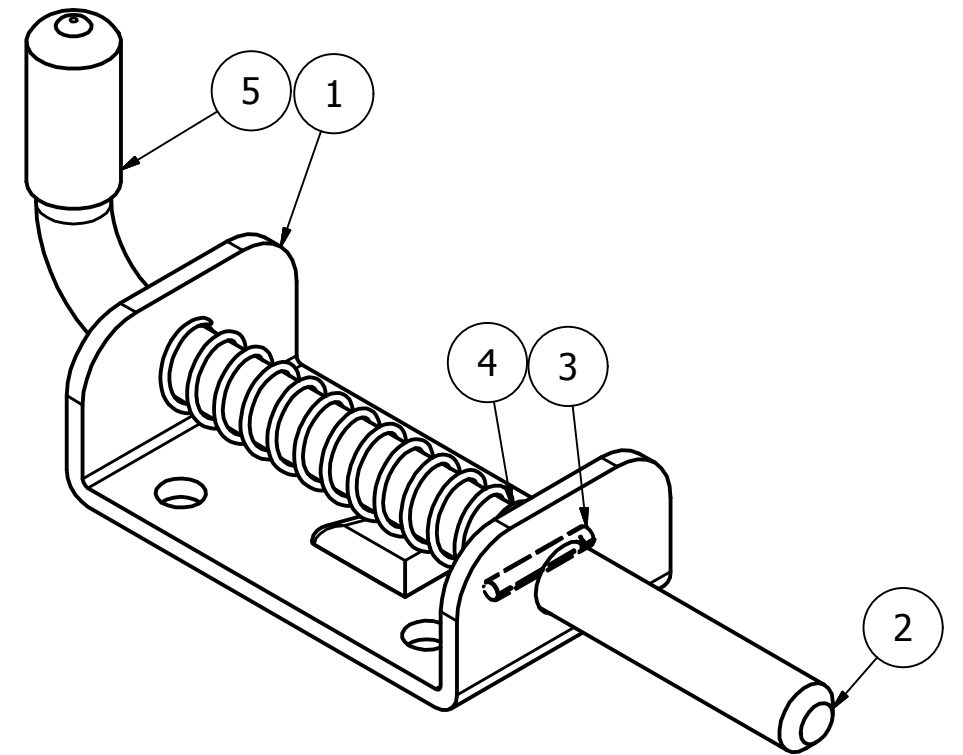


PARTS LIST			
ITEM	QTY	PART NUMBER	DESCRIPTION
1	1	0839-001-1	M/STEEL SPRING BOLT BASE PLATE
2	1	0839-001-2	M/STEEL 90 DEG BOLT - 265 O/A
3	1	0839-001-4	M/STEEL BOLT PIN - 40 O/A
4	1	0839-001-5	M/STEEL SPRING
5	1	0839-001-3	RED PLASTIC CAP



1	VALIDATION COMPLETE	07/12/16	A.P
REV	DESCRIPTION	DATE	APPROVED
U.F	A.P	25/11/2016	A3
SCALE		MATERIAL	MASS
1 : 1		-	0.210 kg
FINISH		Date	ALL DIMS IN MM UNLESS STATED DO NOT SCALE
Z/C PASSIVATE		25/11/2016	
10mm SPRING BOLTS			Edition
0839-001			1
			Sheet
			1 / 1

GENERAL TOLERANCES ON LENGTHS
0.5 - 6 ± 0.1mm
6 - 30 ± 0.2mm
30 - 120 ± 0.3mm
120 - 400 ± 0.5mm
400 - 1000 ± 0.8mm
1000 - 1200 ± 1.2mm
2000 - 4000 ± 2.0mm

DRAWN BY	CHECKED BY
U.F	A.P



SCALE
1 : 1

MATERIAL
-

MASS
0.210 kg

FINISH
Z/C PASSIVATE

Date
25/11/2016

ALL DIMS IN MM UNLESS STATED DO NOT SCALE
---

Edition	Sheet
1	1 / 1